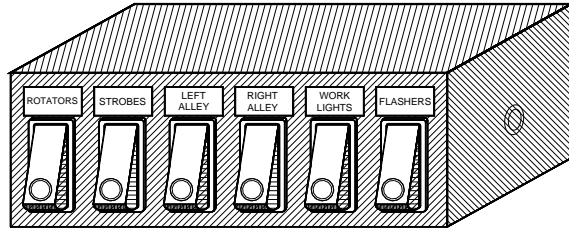


# SB4020T



**IMPORTANT:** Please read all of the following instructions before installing your new switchbox.

Installers should keep in mind the importance of safe installation to protect the lives of those who may depend upon this equipment. Please especially note the following important safety instructions:

- To properly install this equipment you must have a good understanding of automotive electrical procedures and systems, along with proficiency in the installation and use of safety warning equipment.
- Position the switch module so the vehicle controls can be operated safely under all driving conditions. Route your wires such that they do not interfere with the vision of the driver or the operation of the steering wheel, gear shifter, and/or airbag.
- When drilling into a vehicle, be sure both sides of the hole are clear of anything which may be accidentally damaged.
- Keep these instructions in a safe place for future reference when performing maintenance.

**WARNING :** Failure to follow all safety precautions may result in serious injury or property damage.

The SB4020T switch panel has (6) lighted On/Off rocker switches, which can be used to control (6) vehicle mounted devices **totaling a maximum of 60 amps**. Switch 1 can operate a device requiring up to 40 amps. It is protected by a 40 amp self-resetting circuit breaker. Switches 2-6 can handle up to 20 amps and are protected by 20 amp ATO fuses located on the back of the switchbox.

**Legends:** (6) clear legend inserts and (36) choices of 3M Stick-On legends are provided. Place the appropriate stick-on legend on the clear plastic legend and push into appropriate slot above each switch.

**Size:** 6 1/8" Wide X 5 1/4" Deep X 2 1/4" High (including fuses and terminal block).

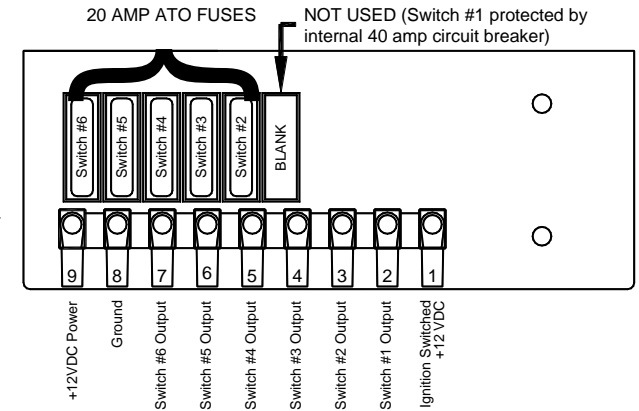
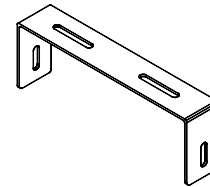
**If you have any questions concerning this or any other Star product, please contact our Customer Service Department at (585) 226-9787.**

**STAR**  
Safety Technologies by *Grate*

455 Rochester Street Avon, NY 14414  
585-226-9500 (F) 888-478-2797  
www.StarSafetyTechnologies.com

PLIT401 REV. A 1/30/24

## Installation



- Select a location to mount your switches. Position the switch box so the vehicle controls can be operated safely under all driving conditions.
- The SB4020T can be mounted using the enclosed "U" bracket or in any appropriate console, using the enclosed bolts.
- There is a 9-position terminal block mounted on the back of the switch box. Strip all of your incoming wires back 3/8" and make your connections as follows:
- Use 18 AWG to connect Terminal 8 to a good chassis ground. Each device connected to the switch must also be grounded with its own separate ground wire. Refer to your installation instructions included with each device to determine proper wire gauge.
- Use 18 AWG wire to connect Terminal 1 to ignition switched +12VDC (You may also use the accessory terminal of the ignition switch or the vehicle instrument light circuit). This will control the backlighting on your switch panel.
- Use 12 AWG wire to connect Terminal 2 to your first switched device(s), up to 40 amps.
- Use 18 AWG wire to connect Terminals 3-7 to your second-sixth switched device(s), up to 20 amps each.
- Power for the switch box may be obtained from a vehicle power distribution center or by a 60, 80, or 100 amp master circuit breaker. We recommend that all circuits be protected with fuses or circuit breakers. We suggest the good electrical practice of fusing all circuits connected to the battery at the battery. Use at least 8 AWG wire to connect Terminal 9 to your master circuit breaker or a power distribution center. If power is obtained in the engine compartment, and a hole is drilled in the firewall, be sure to use a grommet in the hole as to prevent the edges from damaging the wire and causing a short.

**CAUTION:** Take care to insure that both sides of the drilling surface are free and clear of any parts which may be damaged, such as brake lines, fuel lines, electrical wires, or any other vital parts of the vehicle.

### ONE YEAR LIMITED WARRANTY

The manufacturer warrants each new product against factory defects in material and workmanship for one year after the date of purchase. The owner will be responsible for returning to the Service Center any defective item(s) with the transportation costs prepaid. The manufacturer will, without charge, repair or replace *at its option*, products, or part(s), which its inspection determines to be defective. Repaired or replacement item(s) will be returned to the purchaser with transportation costs prepaid from the service point. A copy of the purchaser's receipt must be returned with the defective item(s) in order to qualify for the warranty coverage. Exclusions from this warranty include, but are not limited to, bulbs, strobe tubes, domes, and/or the finish. This warranty shall not apply to any light, which has been altered, such that in the manufacturer's judgment, the performance or reliability has been affected, or if any damage has resulted from abnormal use or service.

There are no warranties expressed or implied (including any warranty of merchantability or fitness), which extend this warranty period. **The loss of use of the product, loss of time, inconvenience, commercial loss or consequential damages, including costs of any labor, are not covered.** The manufacturer reserves the right to change the design of the product without assuming any obligation to modify any product previously manufactured.

This warranty gives you specific legal rights. You might also have additional rights that may vary from state to state. Some states do not allow limitations on how long an implied warranty lasts. Some states do not allow the exclusion or limitation of incidental or consequential damages. Therefore, the above limitation(s) or exclusion(s) may not apply to you.